



## **Figure Engineering**

9208 Venture Ct – C9  
Manassas Park VA 20111  
Info@FigureLLC.com  
www.FigureLLC.com

# ***Installation Manual***



## ***1999-2005 PONTIAC GRAND AM GT FIGURE GRILLE SET***

Dear Customer,

Thank you for purchasing *Figure's 1999-2005 Pontiac Grand Am GT Custom Grille Set*. These grilles are *fabricated* employing quality materials and finishes, and have been engineered to enhance the look of your vehicle for the duration of its life. Proper installation is essential to your overall satisfaction, so please read these instructions before attempting to install the grilles. Exercise patience; these instructions are intended to assist even the most mechanically challenged.

Remember, if you are not 100% satisfied with our product, simply return the set to us (or to the retailer if you did not purchase directly through Figure) within 30 days of purchase for a complete refund.

We always love to see pictures of the installed grilles, so we encourage you to email us your best! (Send to [Info@FigureLLC.com](mailto:Info@FigureLLC.com))

### **Set Contents:**

QTY(2) Upper Grilles  
QTY(2) Lower Grilles  
QTY(1)\* Rear Grille  
QTY(8) Nylon Ties, 4" (High-tensile-strength, UV-resistant)  
QTY(10) 1/4" Push Rivets (Pop-tops)  
QTY(1) 1/4" Shield Retainer  
QTY(8)\* Wire Ties (22-gauge, Stainless)  
QTY(1) Instruction Manual  
QTY(1) *Figure Grilles* Decal

### **Tools Required for Installation:**

Screw driver (slotted)  
Angle cutters (snip pliers)  
Drill, 1/8" bit, 1/4" bit, 1/16" bit\*  
Masking Tape

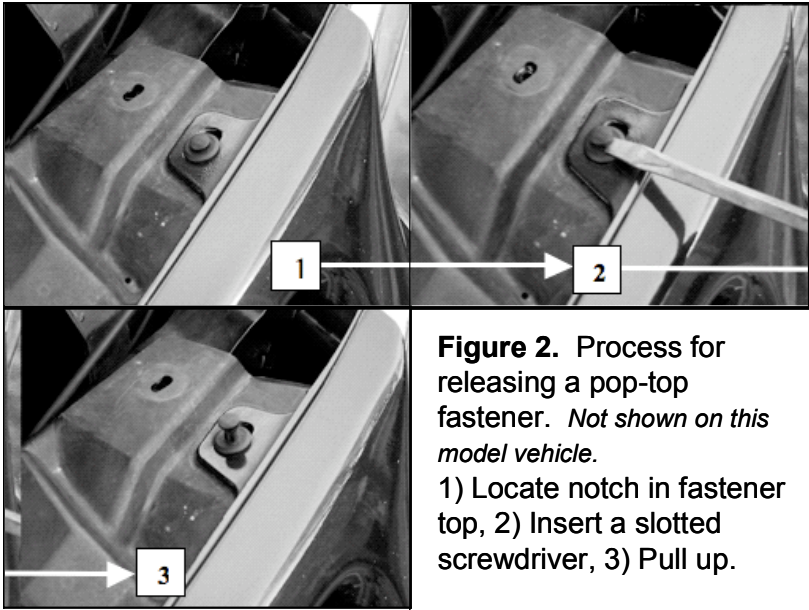
# ***Pontiac Grand Am GT Grille Installation***

## ***1) UPPER GRILLE INSTALLATION***

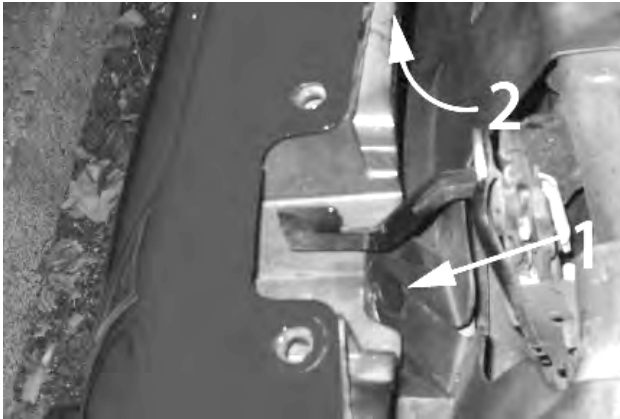
**1.1) Remove the Ram Air cover.** It is attached to the bumper by nine pop-top fasteners at the locations shown in Fig. 1. The pop-top fasteners are easily removed using a small flat head screw driver or a set of needle nose pliers and the procedure shown in Fig. 2. Set the fasteners aside until needed for reinstalling the cover. With the pop-top fasteners removed, pull the Ram Air cover away from the bumper and set it aside. Removing this cover allows access to the back side of the upper grille openings.



**Figure 1.** Location of pop-top fasteners on Grand Am GT Ram Air cover.



**1.2) Remove the OEM upper grille frames.** Located at the transition between the Ram Air scoops and the Ram Air cover are thin grille frames. To remove these, you must first gain access to the backs of the scoops. Cut the head off of the shield retainer (labeled “1” in Fig. 3) that secures the shroud, and rotate the arms that were secured by the retainer upwards. With the shroud arms out of the way, use the pair of angle cutters to cut the heads off the shield retainers that secure the scoop frames. The frames should come away from the scoops easily.



**Figure 3.** Remove shield retainer 1 and rotate the shroud arms out of the way 2.

**1.3) Prepare the scoop openings.** The upper grilles will be held in place by (3) push-rivets, each requiring a 1/4in hole. Templates have been provided on pages dsfasdfasdf to assist you.

1.3a) Apply masking tape to the openings, as shown in Fig. 4. This serves two purposes: 1) it protects the paint during prep, and 2) it makes it easier to mark where to drill.



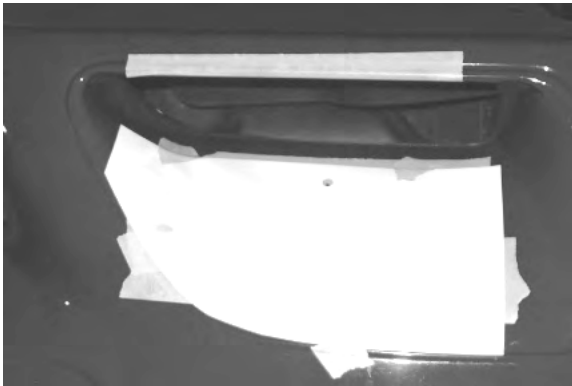
**Figure 4.** Mask off the upper opening to protect paint and make it easier to mark the hole locations.

1.3b) Align the upper template with the OEM holes that previously secured the OEM scoop frame. The orientation of the template is shown in Fig. 5. Mark the holes, BUT DO NOT DRILL THEM.



**Figure 5.** Placement of upper template.

1.3c) Align the lower template with the groove of the scoop as shown in Fig. 6. The edge of the template should touch the inside edge of the groove. Smooth the template to follow the contours of the scoop as best as possible, and then mark the hole placement, BUT DO NOT DRILL.



**Figure 6.**  
Placement of lower template.

1.3d) Test fit the grille. The templates will get the holes close to where they need to be, but for the perfect fit you will likely need to adjust them. Hold the grille in the scoop opening, note the locations of the marks, and adjust as necessary. Pay particular attention to the upper lip; the grille should be slightly recessed uniformly.

1.3e) Drill the holes. In order to drill the upper holes, the drill will be at a very steep angle. Use a small drill bit (1/8" will work well) to drill a pilot (guide) hole. Place your hand between the bumper and the drill to steady the drill and control the bit (it will try to "walk" or move away from the mark.) After the pilot holes are drilled, widen the holes using the 1/4in bit. The lower hole can be drilled the first time with the 1/4in bit. Remove the masking tape.

**1.4) Install the upper grilles.** Place the grille in the opening, and insert a push-riev into one of the upper holes. The push-rievs hold very tight, so they will likely be stiff to engage. Insert a slotted screwdriver through the grille to help use for leverage, as shown in Fig. 7. **DO NOT PRY ON THE GRILLES.** Repeat procedure for other rivets.

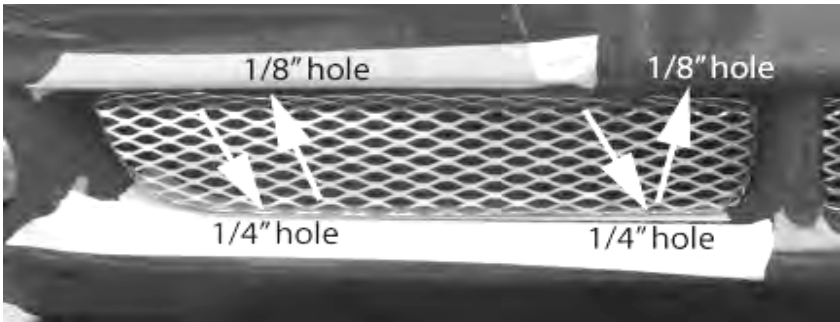


**Figure 7.**

Use a flat head screwdriver to help engage the push rivets. **DO NOT pry on the grilles.** (Shown on lower grille.)

## 2) LOWER GRILLE INSTALLATION

**2.1) Prepare the openings.** The lower grilles install with (2) 1/4in push-rivets in the lower edge and (2) nylon ties in the upper edge. Mask the lower openings and insert the lower grille into the opening. Mark (2) locations along the bottom edge (shown in Fig. 8) that will receive the push-rivets. Mark (2) locations along the upper edge that will receive the nylon ties. These holes should fall on the solid portions of the opening in line with the opening edge, shown roughly in Fig. 8.



**Figure 8.** General placement of holes for lower grille.



**Figure 9.** Mark and drill 1/8in holes in line with the opening edge.

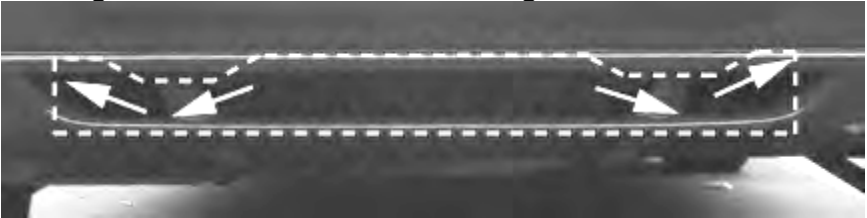


**2.2) Install the grilles.** Drill the marked holes and remove the masking tape. Insert the grilles and secure the upper edge with the nylon ties, but **LEAVE THE TIES LOOSE**. Insert the push rivets and engage them using the method shown in Fig. 7. Fully tighten the nylon ties and clip the tails.

**2.3) Reinstall hardware.** Replace the shroud arms that were moved out of the way to access the Ram Air scoops. Use the 1/4in shield retainer provided in the kit to replace the retainer that was cut off earlier. Install the Ram Air cover and replace the push-rivets that secure the cover.

### **3) REAR GRILLE INSTALLATION**

**3.1) Prepare for installation.** The rear grille is secured with stainless steel wire. Drill 1/16in holes 1/8in away from the edge at the locations shown in Fig. 10.



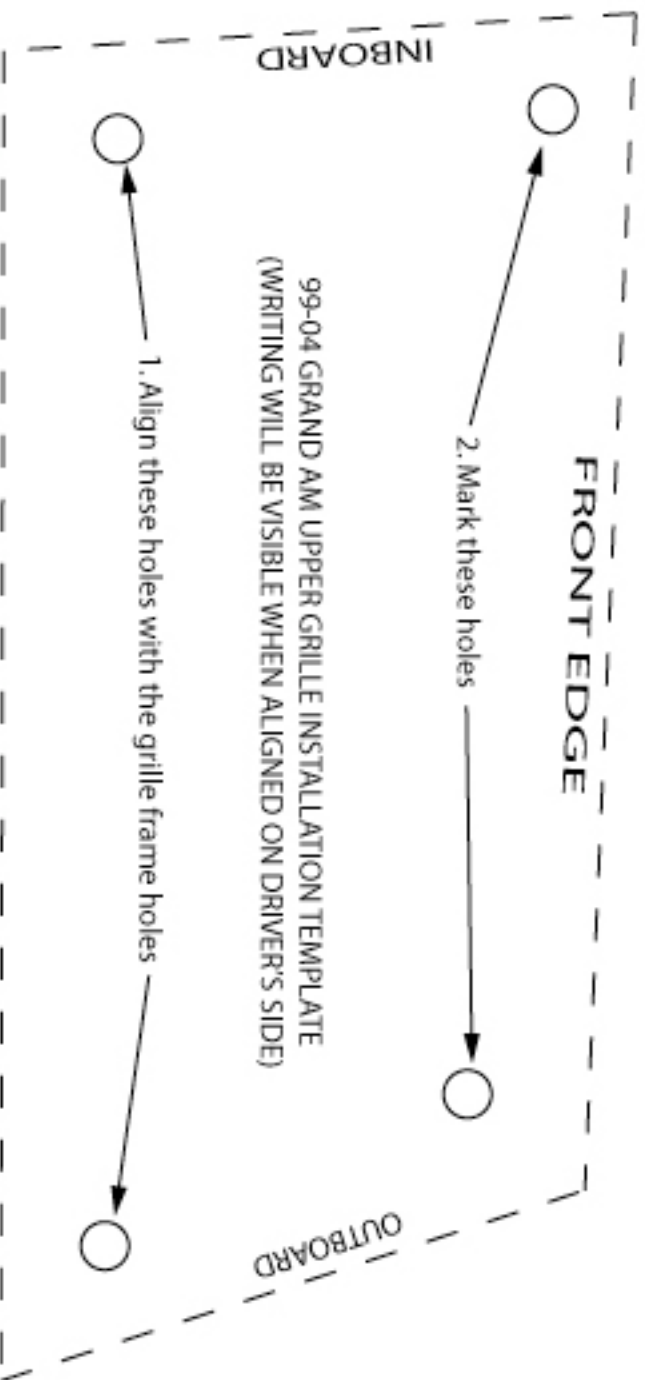
**Figure 10.** Locations for 1/16in holes (arrows) and orientation of grille (dashed line.)

**3.2) Install the rear grille.** Align the rear grille as shown in Fig. 10, and secure it with the wire ties. **DO NOT OVERTWIST** the ties; twist them only enough to hold the grille flat against the opening.


#### **4) *STAND BACK AND ENJOY!***



**3.1) Send pictures to [Info@FigureLLC.com](mailto:Info@FigureLLC.com)!**



99-04 GRAND AM UPPER GRILLE INSTALLATION TEMPLATE  
(WRITING WILL BE VISIBLE WHEN ALIGNED ON DRIVER'S SIDE)

2. Mark this hole 

99-04 GRAND AM UPPER GRILLE INSTALLATION TEMPLATE  
(WRITING WILL BE VISIBLE WHEN ALIGNED ON DRIVER'S SIDE)

*1) Align this edge with ram air intake lip*

