



## **Figure Engineering**

9208 Venture Ct – C9  
Manassas Park VA 20111  
Info@FigureLLC.com  
www.FigureLLC.com

# ***Installation Manual***



## **1997-2003 PONTIAC GRAND PRIX FIGURE GRILLE SET**

Dear Customer,

Thank you for purchasing Figure's 1997-2003 Pontiac Grand Prix Custom Grille set. These grilles have been engineered to enhance the look of your vehicle for the duration of its life. Proper installation is essential to your overall satisfaction, so please read these instructions before attempting to install the grilles. Exercise patience; these instructions are intended to assist even the most mechanically challenged.

Remember, if you are not 100% satisfied with our product, simply return the set to us (or to the retailer if you did not purchase directly through Figure) within 30 days of purchase for a complete refund.

We always love to see pictures of the installed grilles, so we encourage you to email us your best! (Send to [Info@FigureLLC.com](mailto:Info@FigureLLC.com))

Package Contents:

QTY(2) Upper Grilles

QTY(2) Lower Grilles

QTY(20) Nylon ties (High-tensile-strength, UV-resistant)

QTY(8) Speed nut U-clips

QTY(1) Instruction Manual

Tools Required for Installation:

Angle cutters (snip pliers)

Screw driver, slotted

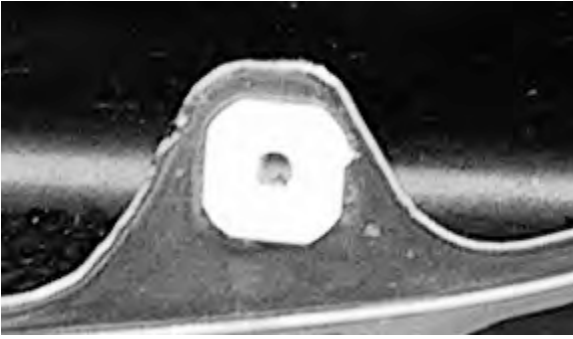
## 1) REMOVE THE STOCK GRILLES

1.1) Remove the top grilles. If you have not already done so, you will first need to remove your stock grilles. The top grilles are held in place by 4 screws indicated by the arrows in Fig. 1. Remove these screws and the grilles will slide down and out.



**Figure 1.** Location of stock grille screws.

**1.2) Remove the screw holders.** There will be four (4) white screw holders, two (2) on each side, where the screws attached to the front of the vehicle. **Fig. 2** shows one of these holders.



**Figure 2.** Screw holder for top grilles.

These need to be removed. Simply press the back side of them and they will pop out. Save these, the screws, and the grilles in case you wish to reinstall them later.

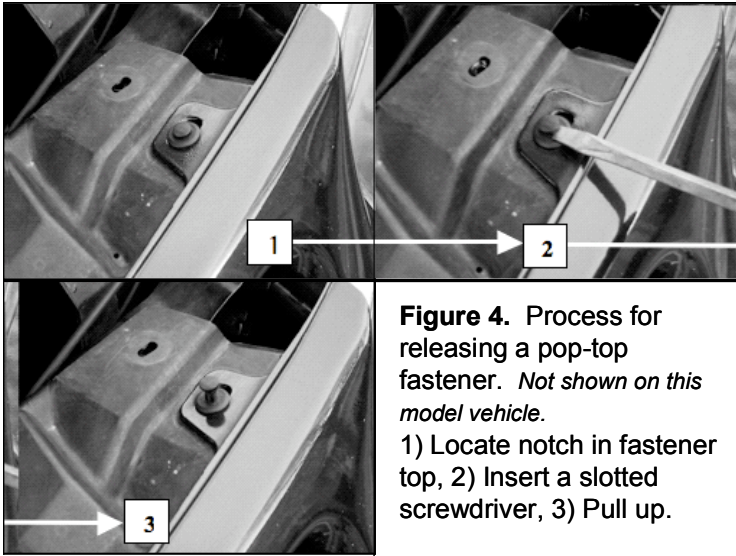
## **2) GAIN GRILLE ACCESS FROM HOOD COMPARTMENT**

**2.1) If you have not already done so, pop your hood.**

**2.2) Remove the air deflector (99-03 only).** On 1999 models and newer there is an air deflector placed over the radiator. This needs to be removed before you can remove the front piece. There are four (4) grommets that hold this piece in place, shown by the arrows in **Fig. 3**. Remove these by following the steps described in **Fig 4**.

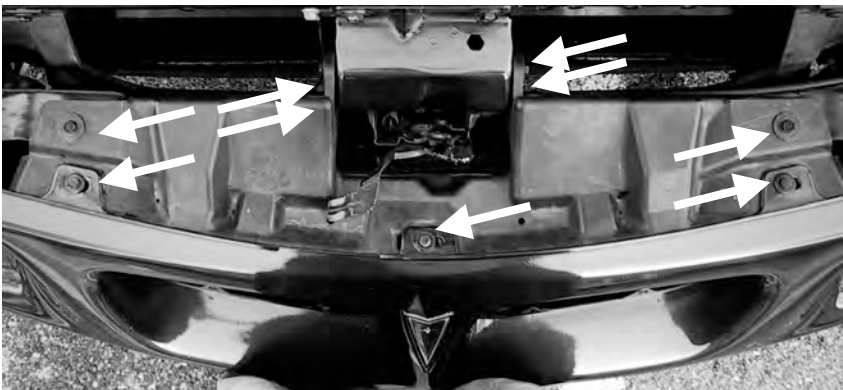


**Figure 3.** Location of air deflector fasteners. (Model Years 99-03)



**Figure 4.** Process for releasing a pop-top fastener. *Not shown on this model vehicle.*  
 1) Locate notch in fastener top, 2) Insert a slotted screwdriver, 3) Pull up.

**2.3) Remove plastic cover.** On all model years (97-03) there is a plastic cover that helps hold the bumper to the front of the vehicle. You will need to remove this cover in order to give your hands access to the back side of the grille openings. There are nine (9) fasteners indicated by the arrows shown in **Fig. 5**. Seven (7) of these fasteners are bolts which are easily reached and removed, but there are two (2) plastic grommets, seen in **Fig. 4**, that are obstructed.



**Figure 5.** Location of front cover fasteners.

To remove the grommet **Fig. 4**, place a screwdriver between the bottom lip and the head and then pry up. After this the grommet can be pulled up and out. When reinstalling grommets, leave the head popped up, place it back in the hole, and then push down on the head to lock it in place.

After the seven (7) bolts and two (2) grommets have been removed the cover will be free. Remove it and set it aside.

### 3) INSTALL THE TOP GRILLES

#### **CAUTION:**

The inside edges of each grille piece have been ground smooth, however, they can still scratch your paint during installation. Take caution when placing them in their openings. If necessary, you can bend the edges in more to ensure they will not rub the paint.

Carefully place a grille in its respective opening and loosely attach it with four (4) nylon ties. Two ties will go through the screw holes, and two will go through the holes indicated by the arrows in **Fig. 6**.



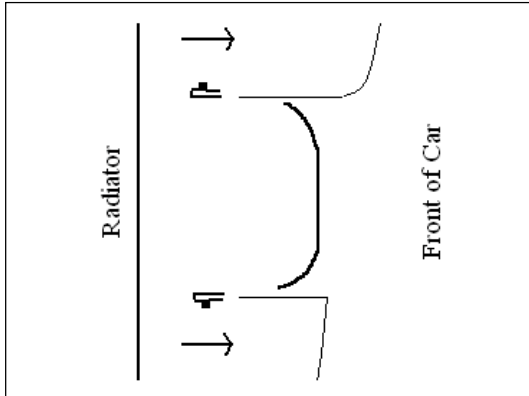
**Figure 6.** Upper grille opening viewed from top.

When installing the nylon ties, find the closest loop on the lip to those holes and through them. After the grille is attached loosely, position it where you want it and then finish tightening the ties. If the grille is loose, the metal can scratch the paint so tighten the ties as tight as possible.

Repeat this process for the second top grille and then replace the pieces you removed to gain access to the grille opening.

#### 4) INSTALL THE BOTTOM GRILLES

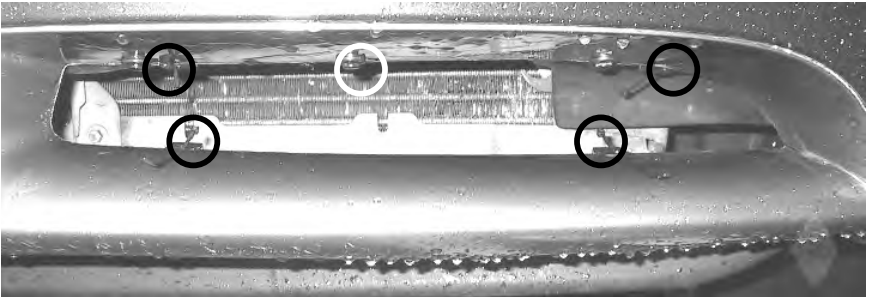
The bottom grilles are attached to the bumper using the provided clips and nylon ties. The clips attach to the bumper (2 on bottom and 2 on top). One side of each clip has a raised hole. This will point away from the opening as seen in **Fig. 7**.



**Figure 7.** Cross-section of lower bumper as viewed from side.

***Before you place the clips on the car, make sure you have inserted the ties through the flat holes.*** It is very difficult to place the zip-ties through the holes once the clips are on the car, and doing this will save you a good deal of

time and effort. Once this has been done, snap the clips on the car as shown in **Fig. 8**.



**Figure 8.** Clip/tie and grommet locations in lower grille opening.

You will hear and feel a click and be unable to press the clips any further when they are fully seated. Installing the top clips is a bit more difficult than the bottom clips. You will need to pull the lip down to be able to slide the raised hole past the lip. All of this is much easier if you can position yourself under the car with a clear view. The exact positioning of the clips at this point does not matter as they are able to slide along the bumper.

The white circle in **Fig. 8** indicates the location of a grommet which holds the bumper in place. Removing this reveals a hole which can be used with a nylon tie. The grilles will remain securely in place using solely clips, but can be removed without tools by a thief. Some people feel safer using this hole, as it will require some kind of cutting device to remove. If you use the hole, pull the upper bumper lip down while sliding a nylon tie through.

Carefully place a grille in its respective hole and then run nylon ties through the closest loop to each clip, but do not yet tighten the ties. You may need to slide the clips left or right to line them up with a grille loop. If you choose to use the grommet hole, loosely attach the tie to the closest loop in the grille. After all 5 ties are attached loosely, carefully



position the grille precisely where you want it and then fully tighten the ties; again, the tighter the better to avoid scratches. Cut the tails off the ties. Repeat this step for the second grille. You're done!



**Figure 9.** Finished, enjoy! (Please send pics to [Info@FigureLLC.com](mailto:Info@FigureLLC.com))