



Figure Engineering

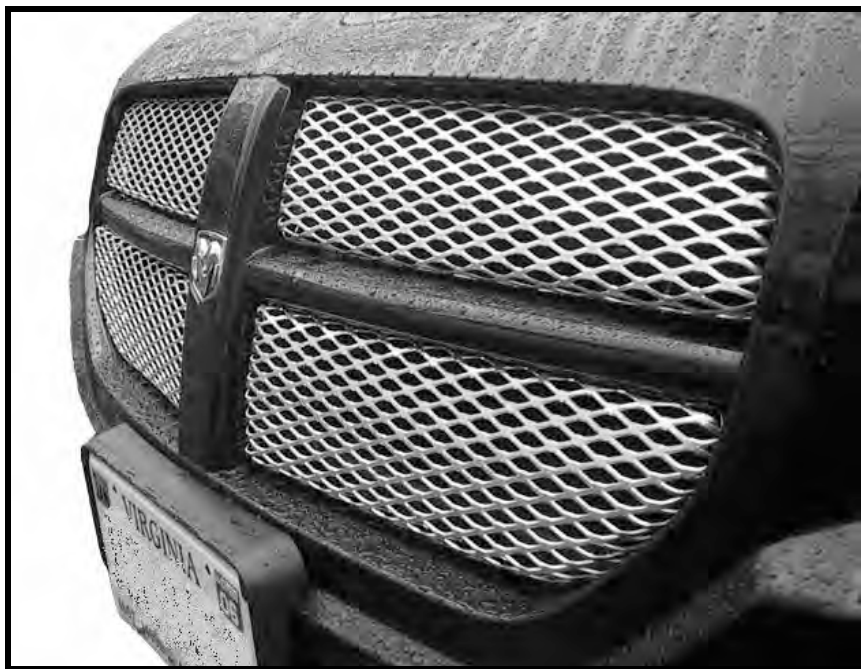
9208 Venture Ct – C9

Manassas Park VA 20111

Info@FigureLLC.com

www.FigureLLC.com

Installation Manual



2005-PRESENT DODGE MAGNUM FIGURE GRILLE SET

Dear Customer,

Thank you for purchasing *Figure's 2005-Present Dodge Magnum Grille Set*. These grilles are fabricated employing quality materials and finishes, and have been engineered to enhance the look of your vehicle for the duration of its life. Proper installation is essential to your overall satisfaction, so please read these instructions before attempting to install the grilles. Exercise patience; these instructions are intended to assist even the most mechanically challenged.

Remember, if you are not 100% satisfied with our product, simply return the set to us (or to the retailer if you did not purchase directly through Figure) within 30 days of purchase for a complete refund.

We always love to see pictures of the installed grilles, so we encourage you to email us your best! (Send to Info@FigureLLC.com)

Set Contents:

QTY(2) Upper Grilles

QTY(2) Lower Grilles

QTY(1)* Bottom full-width grille

QTY(30) Nylon Ties, 4" (High-tensile-strength, UV-resistant)

*QTY(10) Wire Ties (22 gage stainless steel wire)

QTY(1) Instruction Manual

Tools Required for Installation:

Angle cutters (snip pliers)

Drill

Drill bit, 1/8" & *1/16"

Screw driver (slotted) or Needle-nose pliers

* *With full-width lower grille option.*

Dodge Magnum Figure Grille Installation

1) REMOVE STOCK GRILLES

1.1) Remove radiator covers. Begin by popping the hood of your vehicle. There are two plastic protective shields which cover the radiator area. These are held in place by small clips which will let go easily by pulling on the pieces. **Fig. 1** shows these covers and illustrates their removal.



Figure 1. Begin by removing radiator cover.

1.2) Remove the pop-top fasteners. There is a series of 6 “pop-top” fasteners that run along the top of the bumper. When removed, you will be able to pull the bumper away from the vehicle which will gain the needed access to remove the old grilles. To remove these fasteners insert a slotted screwdriver or a pair of needle-nose pliers between the fasteners’ top and bottom. You will see a notch on the outside ring where you will be able to pry up the inner ring. Once you have lifted the inner ring about an inch, the fastener will pull out easily. See **Fig 2**.

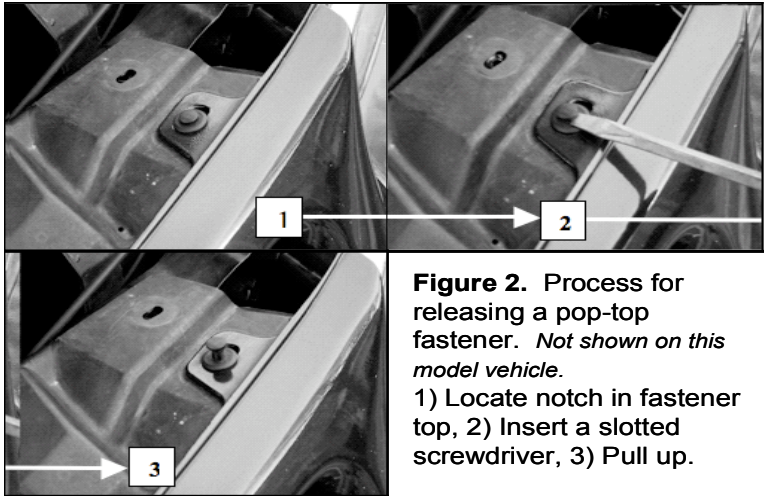


Figure 2. Process for releasing a pop-top fastener. *Not shown on this model vehicle.*
 1) Locate notch in fastener top, 2) Insert a slotted screwdriver, 3) Pull up.

1.3) Remove the yellow clips. The stock grilles are composed of two pieces: one on the driver’s side and one on the passenger’s. There are two yellow clips located at the tops of each stock grille **Fig. 3**. These are easy to pull out using just your fingers.

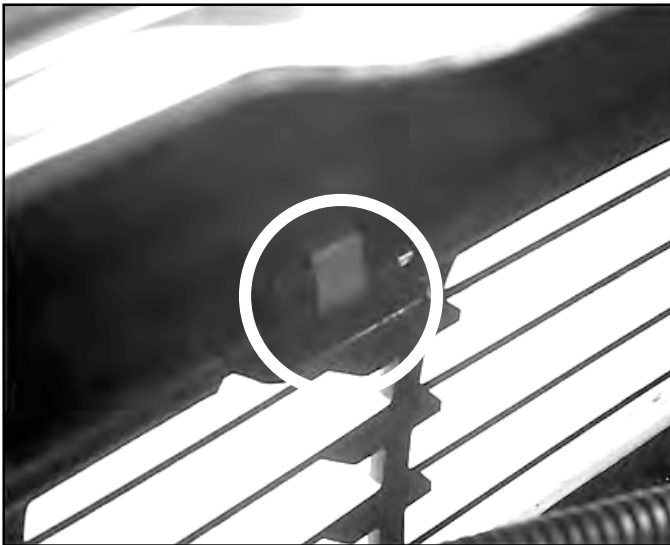


Figure 3. Use your fingers to remove the yellow clip holding the top of each stock grille.

1.4) Remove the remaining fasteners. Additionally, there are 3 fasteners on the bottoms of each grille: one plastic screw with a square head **Fig. 4**, and two Phillips head screws (these are revealed by pulling the bumper away from the vehicle). The square fastener does not require a tool to remove. By turning the head with your fingers the screw will come out.

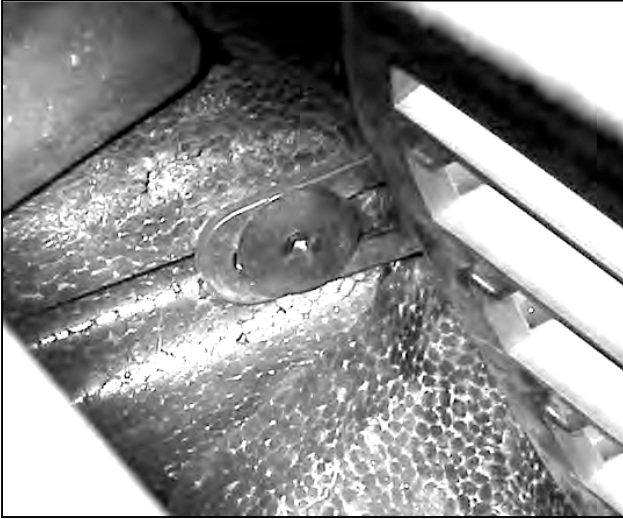


Figure 4. Square head fastener; located on lower outer edge of each grille.

The Phillips head screws are under the foam piece on the vehicle's frame. By pulling the top of the bumper with your hand, they will become visible and you will be able to reach them with a standard screw driver **Fig. 5**.

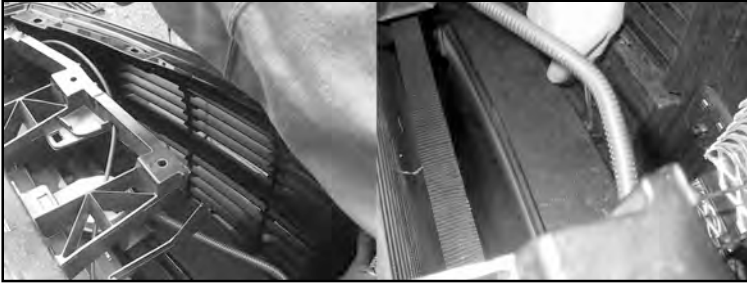


Figure 5. Pull bumper away from car to gain access to the lower screws.

1.5) Remove the stock grille. With these fasteners removed from the grille, it is still snug and in place. You will need to dislodge the clips from the bottoms of each grille by prying the bumper away and pushing down the clip. When this clip is on the bottom edge of the grille, pull the bumper away from the vehicle and pull up on the grille.

2) PREPARE FOR GRILLE INSTALLATION

2.1) Drill holes in the bumper clips. You will now need to drill 8 small holes in the bumper clips to use for fastening the new grilles. There are 8 clips located on the inner arm of the grille opening. These clips are hidden from view when the grilles are installed, and these clips will still work for the stock grilles. Using a 1/8th inch drill bit, drill one hole in the middle of each clip near the lip of the clip **Fig. 6**. On top clips drill down, and on the bottom clips drill up.



Figure 6. Drill holes on inner-arm clips to use for fastening new grilles.

3) Install the optional full-width lower grille. Before reinstalling the grille frame, you will need to install the lower grille, if you have selected this option. If you have not selected this option, skip to **Step 4**. The optional lower grille installs using eight (8) wire ties (22 gage stainless steel).

3.1) Drill 1/16" holes, in the locations shown in **Fig. 7**

Drill these holes about 1/8" from the edge of the bumper (see Figure 8) so that the install wires are nearly invisible when secure. Place the grill against the inside edge of the bumper and loosely attach each of the eight wires. When all fasteners are loosely installed, use a pair of pliers to twist each fully tight, taking care not to over-tighten, as this will break the wire.



Figure 7. Locations to drill holes for lower grille option

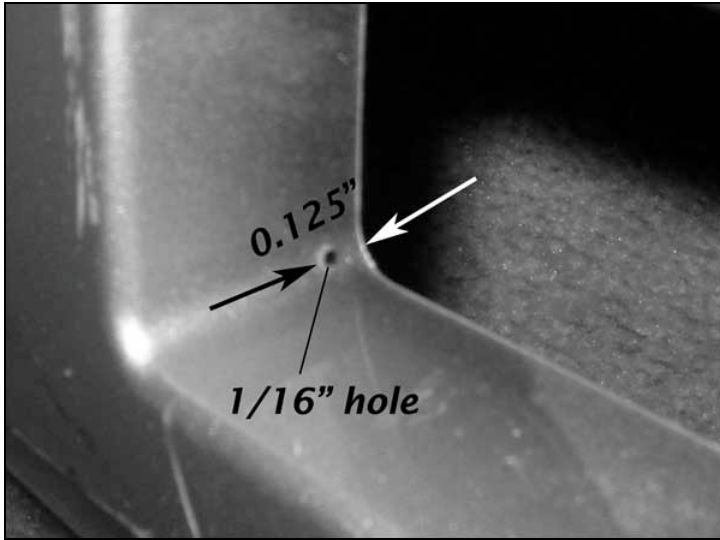


Figure 8. Location to drill holes for lower grille option

4) GRILLE INSTALLATION

4.1) Fit and secure lower grilles. You are now ready to install the new grilles. Begin with the bottom set. *Carefully insert the grille into its opening. Take extreme care when placing, as the fit is tight and the metal edges can scratch paint.* Visually align the grille, and secure it using the nylon ties **Fig. 9.**



Figure 9. Location of lower fastening points.

4.2) Fit and secure the top grilles. The top sets are installed in the same fashion **Fig. 10**. After fully tightening the ties, remove the tails with a pair of scissors or snips.

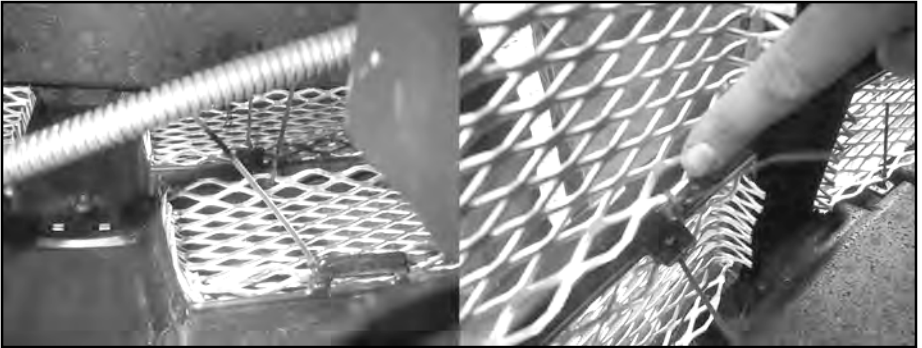


Figure 10. Location of upper fastening points.

4.3) Reinstall hardware. With the new grilles installed you are ready to return the necessary stock hardware. Begin with the bumper fasteners. With the pop-top fasteners in the same position they were in when removed (inner ring 1" up) place all six through the holes and then press the inner ring down. Now place the driver side radiator cover in place and press the clips down. You will feel a slight snap at three points (two toward the cab and one toward the front). Place the passenger side cover in place and again snap down.

5) Close your hood, stand back, and enjoy!



Figure 11. Enjoy!!!

**5.1) Send pictures and feedback to
Info@FigureLLC.com!**