



P.O. Box 1719  
Corona, CA 92878  
Support: 951-493-7100  
www.aFeFilters.com

## Intake Kit Installation Instructions: '97-'04 Chevrolet Corvette C5 / Z06 V8-5.7L

<b>Kit Part #</b>	54-10052	<b>Tools Required:</b>	<b>Part List:</b>	<b>Additional Part List:</b>
<b>Make:</b>	Chevrolet	5/16" nut driver Heat Gun or Hair Dryer	1 Air Filter (P/N# 24-90033)	1 Grommet
<b>Model</b>			1 Intake Tube	1 Hose Vacuum , 4" L
<b>Year</b>			1 Coupling 4" D x 3" L (Red)	
<b>Engine</b>			1 Clamps #056	
Corvette	'97-'04		2 Clamps #064	
			1 Tube Fitting, 3/4" Coupler	

Step 1



Complete kit. Make sure all components listed are included prior to beginning installation.

Step 2



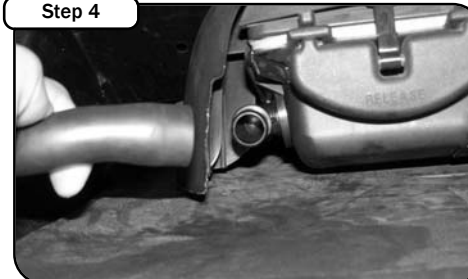
Complete stock intake.

Step 3



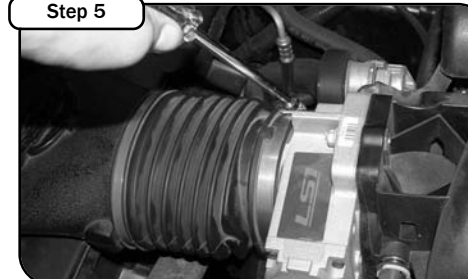
Remove MAF sensor plug.

Step 4



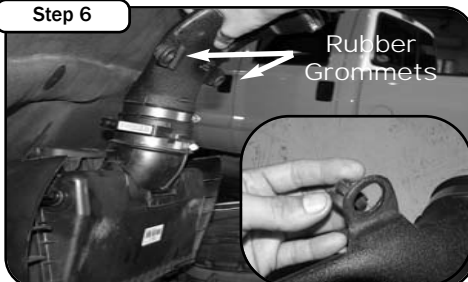
Unplug the air breather hose.

Step 5



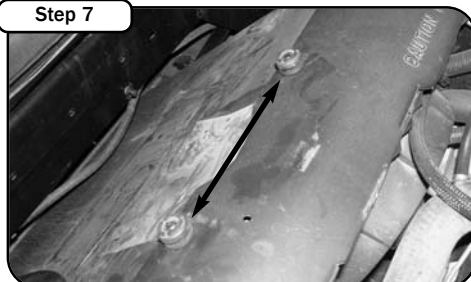
Loosen the clamp holding the OE intake tube to the throttle body.

Step 6



To remove stock housing lift up and pull out. Remove the two rubber grommets on the OE intake tube.

Step 7



Place the two rubber grommets on the two pins located on the engine cover.

Step 8



Loosen the clamps holding the OE intake tube to the OE air box. Remove the tube.

Step 9



Remove the MAF sensor from the OE air box.

Step 11



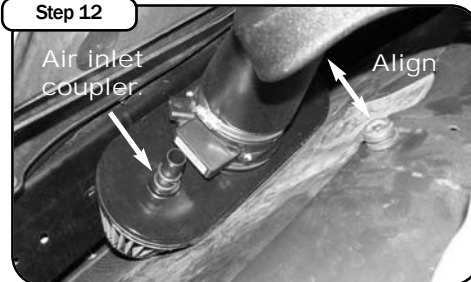
Insert the MAF sensor into the aFe intake tube. Make sure to align the MAF sensor to the groove on the intake tube. This assembly requires a snug fit. If fit is too tight the tube can be heated with a hair dryer or heat gun to allow insertion.

Step 10



After you aligned and inserted the MAF sensor, tighten the clamp. Insert and secure the aFe air filter onto the MAF sensor.

Step 12



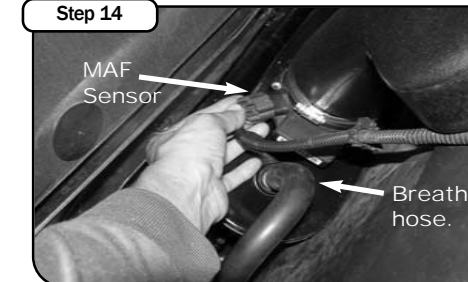
Insert the air hose inlet coupler into the air filter. Sit the intake into position aligning the two rubber grommets with the dimples on the aFe intake tube.

Step 13



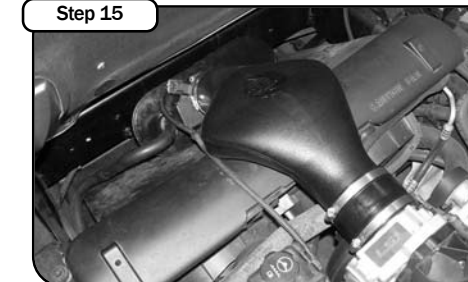
Secure the coupler onto the throttle body and secure in position.

Step 14



Reconnect the MAF sensor and air inlet hose to the air filter.

Step 15



Place enclosed CARB EO sticker on a clean/smooth surface on or near the intake system. EO identification label is required in passing the Smog Check inspection. Your installation is now complete. Make sure you tighten all clamps and check all electrical connections. Re-check periodically.

Note: Filter Cleaning and Re-oiling: When cleaning your aFe filter, be sure to use only aFe's "Restore Kit" (aFe P/N: 90-50001 blue oil aerosol, or aFe P/N: 90-50501 blue squeeze bottle oil).  
Filter Replacement: Magnum FLOW PN: 24-90033 (black w/blue media).



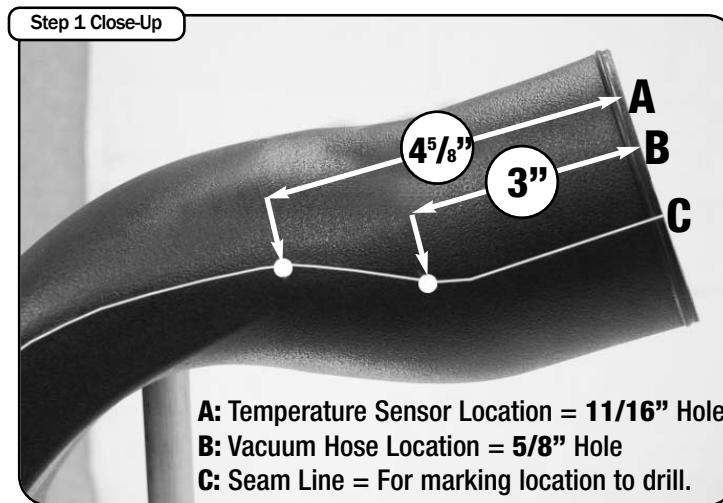
P.O. Box 1719  
Corona, CA 92878  
Support: 951-493-7100  
www.aFeFilters.com

## Additional Intake Kit Installation Instructions: '97-'00 Chevrolet Corvette C5 / Z06 V8-5.7L

<b>Kit Part #</b> 54-10052			<b>Tools Required:</b> 11/16” Woodworking flat spade bit. 5/8” Woodworking flat spade bit.	
<b>Make:</b> Chevrolet				
<b>Model</b>	<b>Year</b>	<b>Engine</b>	<b>Note:</b> A woodworking flat spade bit drills through plastic better than a twist drill. These drills are commonly available for less than \$4 ea.	
Corvette	'97-'00	V8-5.7L, LS1, Z06		



This is a photo of the complete intake system. Please note that some minor modifications will be necessary for some early model C5's.



For early C5 models with a temperature sensor and OR fuel pressure regulator vacuum line, please drill holes at the following locations.

Measure the location for drilling along the **C seam line** at either **A** or **B** measurements.

1. **A:** Temperature Sensor @ **4 5/8"** drill **11/16"** hole. Transfer and re-use original grommet and temperature sensor.
2. **B:** Vacuum Hose @ **3"** drill **11/16"** hole. Insert new grommet & original vacuum fitting. Connect rubber vent hose between vacuum fitting and hard plastic line.



Insert the MAF sensor into the aFe intake tube. Make sure to align the MAF sensor tab to the proper groove on the intake tube according to your vehicle model.

This assembly requires a snug fit.

**Late model** installations with a 3.7" slip connection use the **A** notch at the tubes seam line for the MAF sensor alignment tab. If fit is too tight the tube can be heated with a hair dryer or heat gun to allow insertion.

**Early model** installations with a smaller 3.5" slip connection use the **B** notch for the MAF sensor alignment tab. The fit will appear loose but will tighten snug as designed. Retighten after a few hours of operation.



1. **A:** Late Models
2. **B:** Early Models
3. **C:** Seam Line