

COLD AIR



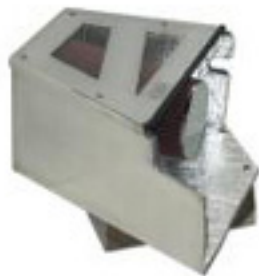
INDUCTIONS

05-07 Grand Prix GXP

06-07 Monte Carlo SS

06-07 Impala SS

(501-0520 , 501-0519 , 501-051939)



Installation Instructions

WWW.COLDAIRINDUCTIONS.COM

1	Insulated Air Box \ Lid
1	Silicone Coupler*
1	CAI Cone Filter (CF-9337)
2	C-Clips W/Bolts
4	ECM/TCM Fasteners

* V-8 Models Only

I. Removing OEM Air Box

I. Remove diagonal cross brace.

II. Loosen hose clamp on F-duct.

III. Remove OEM air box & MAF (As shown in figure 1).

(Removing air box does not require PCM/ECM to be disconnected)

IV. Remove MAF from OEM air box by removing both screws (As shown in figure 2). Make sure O-ring is removed from MAF.



Figure 1



Figure 2

2. Installing Insulated Air Box.

I. Install provided C-clip nuts into inner fender well (As shown in figure 3).

II. Install air box. Fasten box with the two provided bolts (As shown in figure 4).

III. Place ECM into air box over mounting studs. Tighten both provided nuts to secure PCM (As shown in figure 5).

IV. Place TCM over mounting studs on side of air box (As shown in figure 5). Tighten both mounting bolts.



Figure 3



Figure 6



Figure 7

3. Installing Silicone Intake Coupler.

I. Remove plastic bung from stock intake below. (As shown in figure 6)

II. Install bung into silicone coupler. (As shown in figure 7)

III. Install silicone coupler onto throttle body. (As shown in figure 8)



Figure 4

4. Installing MAF & CAI 9" Cone Filter

I. Install MAF into silicon coupler (As shown in figure 8)

II. Reconnect MAF sensor and breather tube that was disconnected in step 1.

Note: Clean ID of filter with isopropyl alcohol to insure bonding grip.

III. Install CAI cone filter and tighten hose clamp (As shown in figure 9)

IV. Align silicone coupler, MAF, and air filter into air box and tighten clamps.



Figure 5

5. Installing Air Box Lid & Diagonal Brace.

I. Install air box lid and fasten by turning fasteners 1/4 turn.

II. Reinstall diagonal brace.

Install Complete



Figure 8



Figure 9