



Figure Engineering

9208 Venture Ct – C9
Manassas Park VA 20111
Info@FigureLLC.com
www.FigureLLC.com

Installation Manual



2006-PRESENT DODGE CHARGER FIGURE GRILLE SET

Dear Customer,

Thank you for purchasing *Figure's 2005-Present Dodge Charger Grille set*. These grilles are fabricated employing quality materials and finishes, and have been engineered to enhance the look of your vehicle for the duration of its life. Proper installation is essential to your overall satisfaction, so please read these instructions before attempting to install the grilles. Exercise patience; these instructions are intended to assist even the most mechanically challenged.

Remember, if you are not 100% satisfied with our product, simply return the set to us (or to the retailer if you did not purchase directly through Figure) within 30 days of purchase for a complete refund.

We always love to see pictures of the installed grilles, so we encourage you to email us your best! (Send to Info@FigureLLC.com)

Package Contents:

QTY(2) Upper Grilles

QTY(2) Lower Grilles

*QTY(1) Full-Width Lower Grille

QTY(30) Nylon Ties, 4" (High-tensile-strength, UV-resistant)

*QTY(10) Tie Mounts (22 gage galvanized steel wire)

QTY(1) Instruction Manual

Tools Required for Installation:

Angle cutters (snip pliers)

Drill

Drill bit, 1/8" & *1/16"

Screwdriver, medium slotted

Screwdriver, small slotted

Screwdriver, low-profile Philips (***Fig. 1***)

*Needle nose pliers

* *With full-width lower grille option.*

Dodge Charger Figure Grille Installation

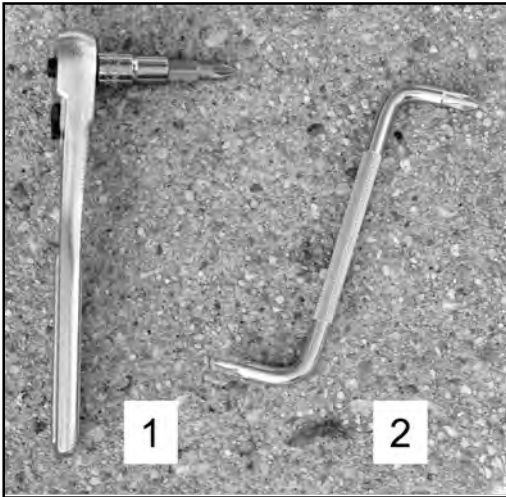


Figure 1. Examples of low-profile Philips screwdrivers.
1) Ratchet (1/4" drive) with 1/4" socket and Philips bit.
2) Offset Philips screwdriver.

1.1) Remove radiator covers. Begin by popping the hood of your vehicle. There are two plastic protective shields which cover the radiator area. These are held in place by small clips which will let go easily by pulling on the pieces. **Fig. 2** shows these covers and illustrates their removal.



Figure 2. Removal of radiator covers.

1.2) Remove the grille frame screws. The grille assembly consists of two pieces, the grille frame and the grille (**Fig. 3**). Both must be removed from the vehicle to release the grille.



Figure 3. Grille assembly comprising a grille frame (above) and grille.

Use a low-profile Philips screwdriver (**Fig. 1**) to remove the four screws that secure the grille assembly to the bumper. The locations of these screws are shown in **Fig. 4**.

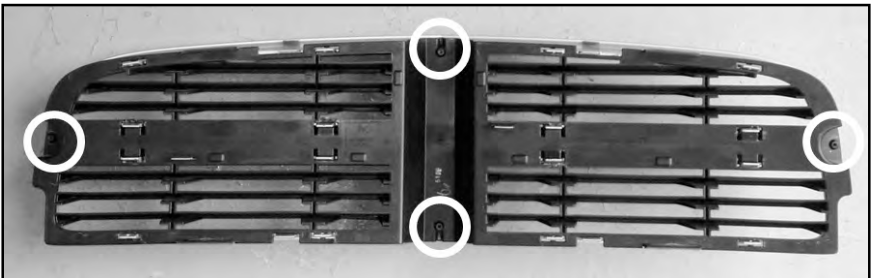


Figure 4. Locations of grille assembly screws.

1.4) Remove grille assembly from bumper. Once the four screws are removed from the grille assembly, the grille frame is still held in place by four tabs along its perimeter. These tabs are visible from inside the engine compartment (**Fig. 5**). Insert a slotted screwdriver between the grille frame and the bumper at the outside of the vehicle (**Fig. 6**), and gently pry the grille frame from the bumper by freeing each of the four tabs as you work your way around the grille frame.

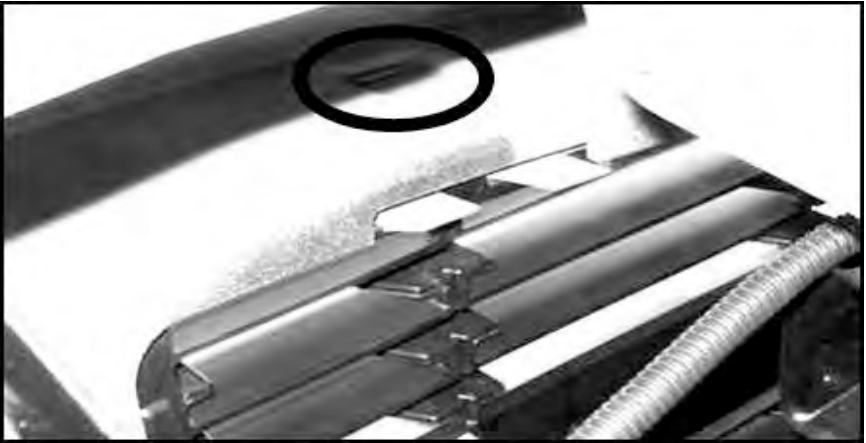


Figure 5. The tabs securing the grille frame to the bumper are visible from inside the engine compartment.

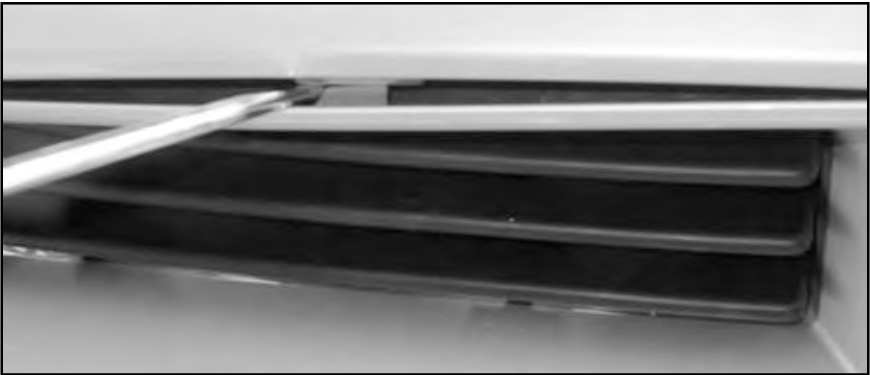


Figure 6. Use a slotted screwdriver to gently pry the grille frame from the bumper. **Helpful hint:** *Wrap the screwdriver with masking or electrical tape to guard against scratches.*

1.5) Separate the grille from the grille frame. First free the outsides of the grille from the frame by inserting a slotted screwdriver between the grille and the frame at the tab clips (**Fig. 7.1**), and pry upward until the grill slot is free of the retaining lip on the frame tab (**Fig. 7.2**).

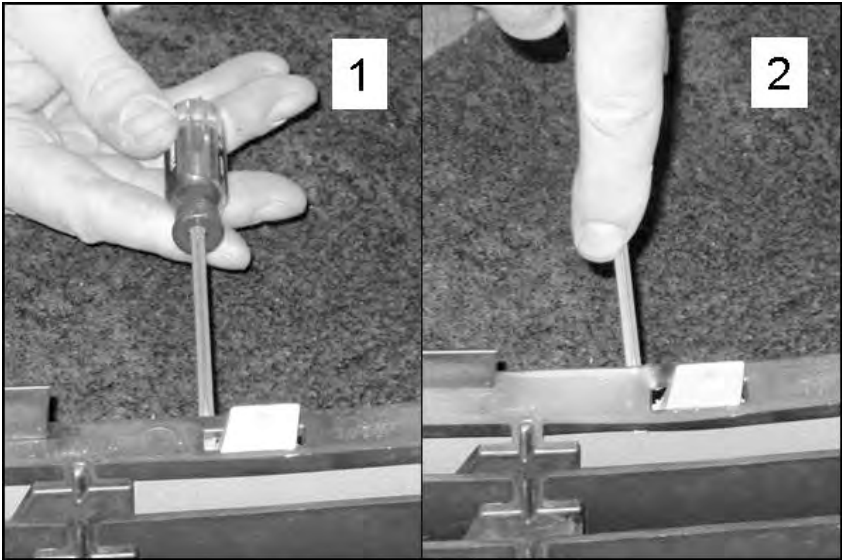


Figure 7. Method of disassembling outer grille clips.

Next, use two slotted screwdrivers to free the inner clips, as demonstrated in **Fig. 8** and **Fig. 9**. The grille should now be separated from the grille frame.

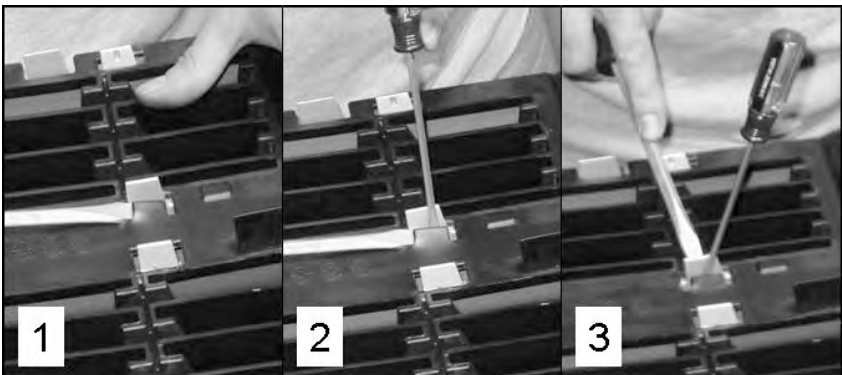


Figure 8. Method for disassembling inner grille clips.

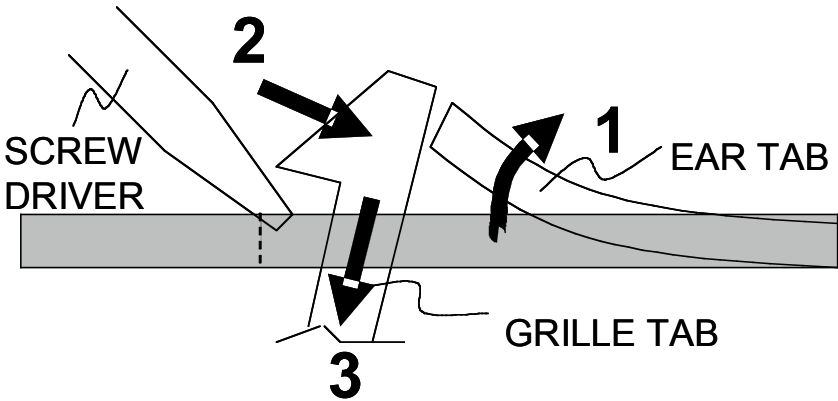


Figure 9. Method for freeing inner grille clips.

2) Prepare the grille frame for installation. Drill a 1/8" hole in each of the sixteen frame tabs that held the stock grille in place. Be sure to place the hole against the retaining lip on the finished side of the lip, as shown in **Fig. 10**.

Note: *The holes drilled in the frame do not affect the fit or appearance of the stock grille, should you desire to reinstall it in the future; the holes are completely hidden.*



Figure 10. Drill a 1/8" hole on the *finished side* of the retaining lip. The hole should touch the retaining lip.

3) Install the grilles into the grille frame. Fit the grilles into their respective openings and secure them with the nylon ties, as shown in **Fig. 11**. Notice the grille backs up against the retaining lip that secured the stock grilles. It may be necessary to make minor adjustments to perfect the fit. Clip the tails from the ties with angle cutters.

???WHY NYLON TIES??? Nylon ties have been selected as the primary means of securing these grilles for two reasons: 1) Nylon ties are nearly invisible on installed grilles, providing a clean look. 2) The high-tensile-strength ties provided are extremely strong, and surprisingly theft-deterrent, since they do not allow the grilles to be popped out like the stock grilles; in order to break the ties, a thief is required to access the engine compartment. These ties and mounts are also UV- and weather-resistant for long life.

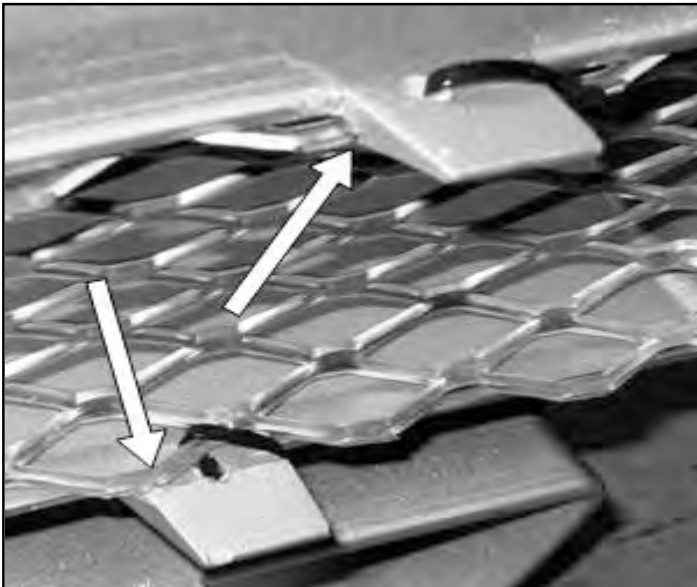


Figure 11. Grilles installed. The arrows point to where the grille seats against the frame tabs' retaining lip.

4) Install the optional full-width lower grille. Before reinstalling the grille frame, you will need to install the lower

grille, if you have selected this option. If you have not selected this option, skip to **Step 5**.

The optional lower grille installs using eight pieces of 22 Gage galvanized steel.

4.1) Drill 1/16” holes, in the locations shown in **Fig. 12**

Drill these holes about 1/8” from the edge of the bumper (see Figure 13) so that the install wires are nearly invisible when secure. Place the grill against the inside edge of the bumper and loosely attach each of the eight wires. When all fasteners are loosely installed, use a pair of pliers to twist each fully tight.

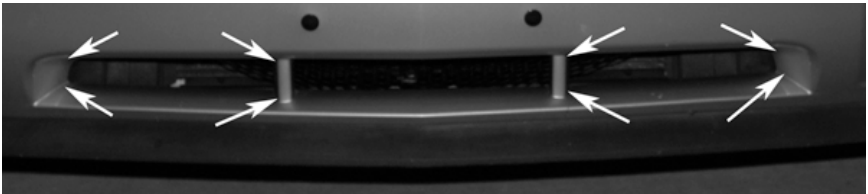


Figure 12. Locations to drill holes for lower grille option

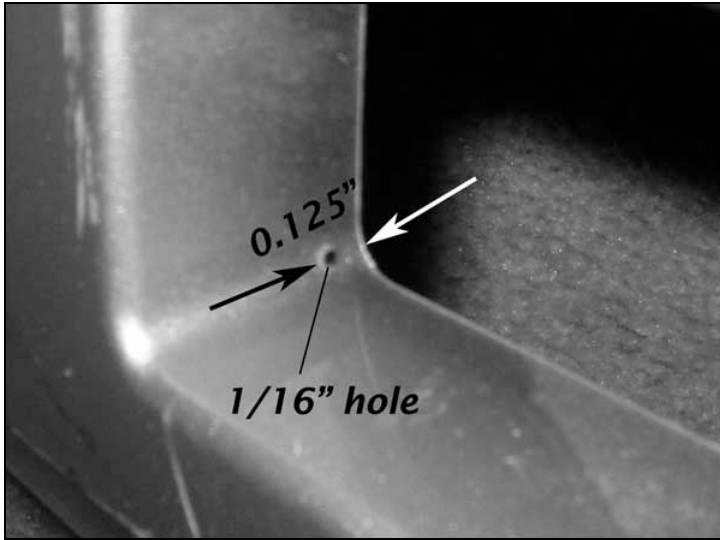


Figure 13. Location to drill holes for lower grille option

5.1) Modify the grille frame for reinstallation. The grille frame must be modified since the stock grille, now removed, held the grille to the bumper. Drill 1/8" holes in the grille frame tabs (two for each of the four grille openings for a total of eight) as shown in **Fig. 14**. Note the proper hole placement on the larger tabs.

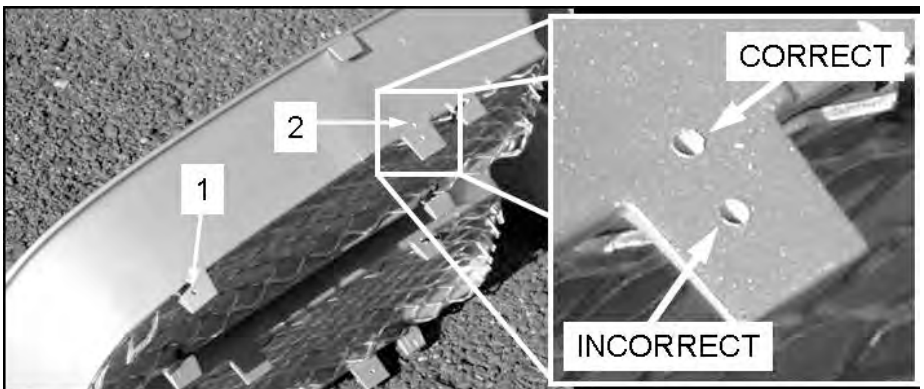


Figure 14. Location of grille frame mounting holes.

5.2) Modify the bumper to accept the grille frame. Insert the grille frame into the bumper opening and note the location of the frame holes relative to the bumper. Drill holes in the lip of the bumper in these locations as shown in **Fig. 15**.

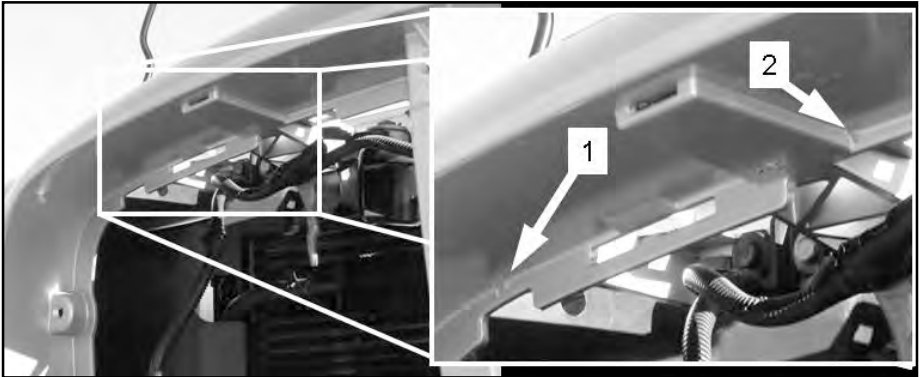


Figure 15. Example of location of bumper holes. **Note: Tabs on grille frame are not symmetrical!**

5.3) Install grille frame. Insert the grille frame into the bumper opening, and use nylon ties to secure the grille in the 8 locations at which you drilled the holes. Cut the tails off the ties.

5.4) Reinstall the radiator covers. Install the driver's side, then the passenger's side.

6) STAND BACK AND ENJOY!!!



6.1) Send pictures and feedback to Info@FigureLLC.com