



## **Figure Engineering**

9208 Venture Ct – C9

Manassas Park VA 20111

Info@FigureLLC.com

www.FigureLLC.com

# ***Installation Manual***



## ***2005-PRESENT PONTIAC G6 FIGURE GRILLE SET***

Dear Customer,

Thank you for purchasing *Figure's 2006-Present Pontiac G6 Grille Set*. These grilles are fabricated employing quality materials and finishes, and have been engineered to enhance the look of your vehicle for the duration of its life. Proper installation is essential to your overall satisfaction, so please read these instructions before attempting to install the grilles. Exercise patience; these instructions are intended to assist even the most mechanically challenged.

Remember, if you are not 100% satisfied with our product, simply return the set to us (or to the retailer if you did not purchase directly through Figure) within 30 days of purchase for a complete refund.

We always love to see pictures of the installed grilles, so we encourage you to email us your best!

***Package Contents:***

QTY(2) Upper Grilles

QTY(2) Lower Grilles

QTY(30) Nylon Ties, 4" (High-tensile-strength, UV-resistant)

QTY(1) Instruction Manual

***Tools Required for Installation:***

Angle cutters (snip pliers)

Screwdriver, flathead

10 mm wrench

Playing card

Pliers, needle-nose

Drill

Drill bit, 1/8"

# Pontiac G6 Grille Installation

## 1) UPPER GRILLE INSTALLATION

### 1.1) Remove the upper grilles.

Each upper grille is held in place by 8 tabs. Using a playing card and a flat-head screwdriver, carefully pry the chrome molding away from the bumper in each of the 8 locations shown in Fig. 1

The inner grille is held in place by 4 tabs (1 on each side). Using the screwdriver and playing card, carefully pry these free from the bumper.

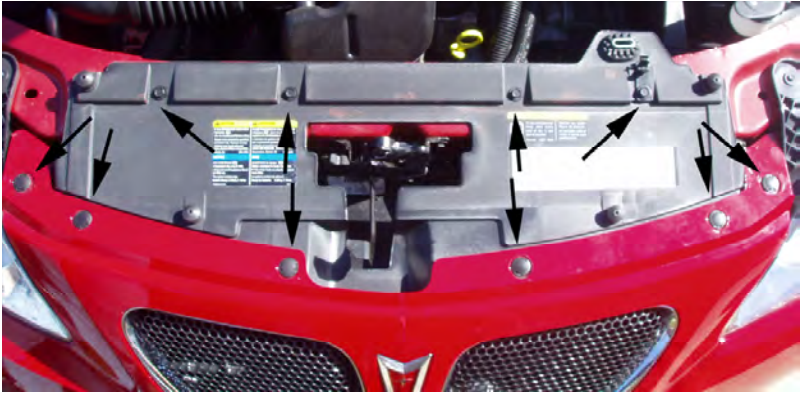
**BE VERY CAREFUL WHEN REMOVING THE FACTORY GRILLES FROM YOUR VEHICLE. THE PAINTED FINISH OF YOUR VEHICLE IS EASILY DAMAGED, BUT IF PROPER CARE IS TAKEN, YOU CAN EASILY REMOVE THE GRILLES WITHOUT HARMING THE SURROUNDING PORTIONS OF THE VEHICLE.**



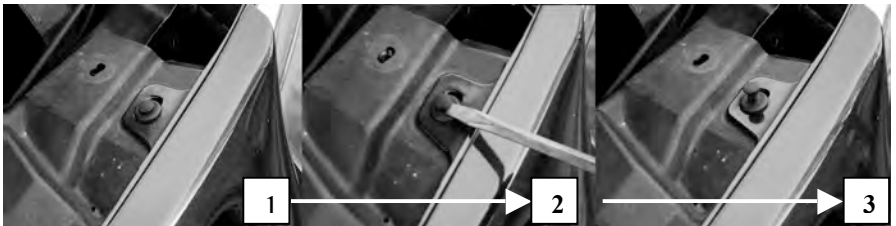
**Fig. 1 – Location of upper grille border retainers and method of removal.**

### 1.2) Remove radiator cover.

To gain the access necessary to install the upper grilles, you will need to free the radiator cover that is held in place by four 10mm bolts and six pop-top fasteners (locations pictured in Fig. 2). Pop-top fasteners are removed by inserting a small flat head screw driver in the slot, prying the inner section up, and then pulling the fastener up (see Fig. 3).



**Fig. 2 – Location of radiator cover fasteners**



**Fig. 3 - Sequence for removing pop-top fastener**

### **1.3) Install upper grilles.**

Re-install the chrome trim on each side. There are 4 holes around each grille opening that were used for the OEM grille. These will be free now that the OEM grille is removed and will be used for nylon ties on your new grille. Feed a Figure grille from the back of the respective opening and then feed a nylon tie through the top opening (see Figure 4). Loosely attach this first tie, and then feed ties through each of the other 3 holes through the proper loops (the lower three loops intended for use with the nylon ties are deeper and easily identified). When all 4 ties are secured cut the ends and repeat step 1.3 for the opposite side.

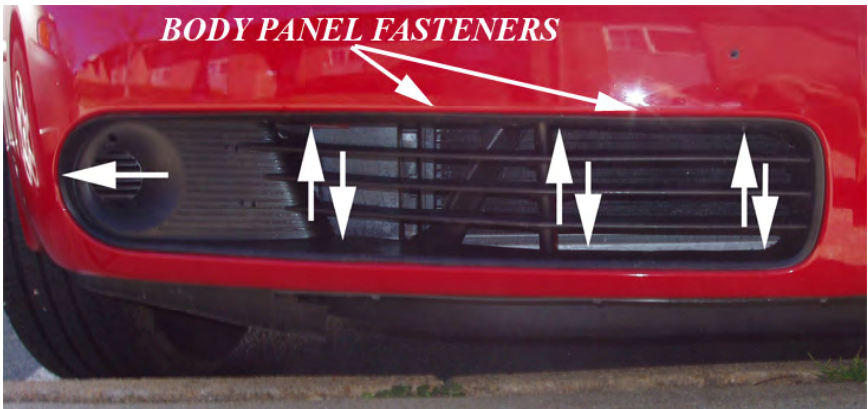


**Fig. 4 - Sequence for fastening upper grille**

## 2) LOWER GRILLE INSTALLATION

### 2.1) Remove the lower grilles.

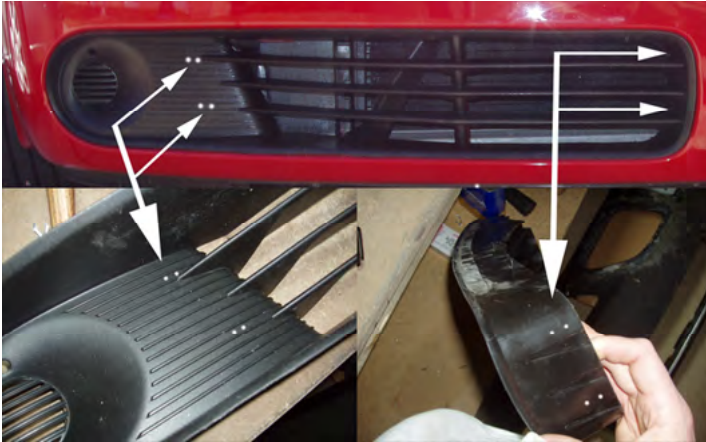
Each of the lower grilles is held in place by seven hooks (see Fig. 4), two body panel fasteners, and two strips of adhesive tape. Using needle-nose pliers, you can pry the body panel fasteners free. Using the playing card method of Fig. 1, carefully pry each of the hooks on the top and bottom edge of the grille free from the bumper. The hook on the ends is a slot that is freed when you pull the grille out of the opening. The adhesive tape will offer some resistance. Press firmly on the grille and break the tape free. Then pull the grille out of the opening.



**Fig. 5** – Location of lower grille fasteners.

### 2.2) Install lower grille inserts in factory grilles

Prepare each lower grille to accept the grille insert. Drill 1/8" holes in the locations depicted in Fig. 5. The holes will be used with nylon ties to hold each grille insert in the stock grilles. To get a better idea of where to drill the holes, place the respective insert in the grille and mark where the holes need to be with a pencil. Remember, they can be placed such that they are invisible when the inserts are installed.



**Fig. 6** – Location for 1/8" holes to attach lower grille inserts

With the holes drilled, secure the inserts with nylon ties. The easiest way to do this is by securing the end closest to the fog light hole and then the far end.

### **2.3) Install lower grille assembly**

To re-install the grill, feed the tab that is on the fog light end into the bumper slot, and then push the grille around its border until each of the hooks snaps into place (you will feel them snap). Then push each of the body panel fasteners back into place.

### **3) STAND BACK AND ENJOY!**



**Fig. 7 - Grilles in position, Enjoy!**

**3.1) Send pictures and feedback to  
Info@FigureLLC.com!**