

COLD AIR



INDUCTIONS

1997-2003 Grand Prix GT, GTP

1997-2004 Regal GS

2000-2005 Monte Carlo SS

2000-2005 Impala SS

(501-0873)

Installation Instructions



WWW.COLDAIRINDUCTIONS.COM

1. Removing OEM Air Box

- I. Remove diagonal cross brace.
- II. Loosen hose clamp on F-duct.
- III. Remove OEM air box.
(Removing air box does not require PCM to be disconnected)



Figure 1

2. Installing PCM Tray & PCM

- I. Lay connected PCM to side (As shown in figure 1).
- II. Install provided C-clip nuts into inner fender well (As shown in figure 2).
- III. Install PCM tray. Fasten tray with the two provided bolts (As shown in figure 3).
- IV. Place PCM into PCM tray (As shown in figure 4).



Figure 2

Note: If PCM tray will not fit due to metal stud. Remove stud



Figure 3



Figure 4

3. Installing CAI, Inc. Air Box

- I. Place air box onto PCM tray (As shown in figure 5).
- II. Fasten air box to PCM with the three provided screws. (As shown in figure 5). This will secure PCM.

For ease of installment, install screws as numbered in figure 5.

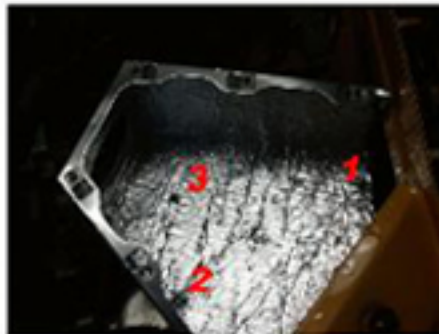


Figure 5

4. Installing CAI, Inc. 9" Cone Filter

- I. Install supplied aluminum tube into air filter (As shown in figure 6)
- II. Tighten base of filter onto aluminum tube firmly.
- III. Place filter into air box (As shown in figure 7). Put tube into stock F-duct and tighten hose clamp securely.



Figure 6



Figure 7

5. Installing Air Box Lid

- I. Place edge of lid under radiator support (As shown in figure 8).
- II. Place lid onto air box and secure by turning quarter turn fasteners 1/4 turn.



Figure 8

5. Reinstall Diagonal Cross Brace



Install Complete